

GROUP PROFIT AND LOSS

(billion rupiah)	2014	2015	3Q 15 YTD*	3Q 16 YTD*
Revenue	11,027	10,157	7,523	9,355
Profit Attributable to Shareholders	253	291	199	423
EBITDA	577	702	489	783
FINANCIAL RATIOS				
Average ROE Attributable to Shareholders**	12.2%	12.9%	11.9%	22.0%
Average ROA**	6.8%	7.0%	6.3%	12.0%
EPS (Rp)	45	52	36	76
Dividend per Share				
Interim (Rp)	4.0	4.0	-	-
Final (Rp)	10.0	12.0	-	-

\* Unaudited  
\*\* Annualised

GROUP FINANCIAL POSITION

(billion rupiah)	2014**	2015	3Q 15 YTD*	3Q 16 YTD*
Current Assets	1,790	1,897	2,011	2,383
Fixed Assets - Net	1,655	1,784	1,799	1,810
Total Assets	3,967	4,362	4,488	5,006
Current Liabilities	1,261	1,374	1,531	1,725
Non-Current Liabilities	553	607	652	529
Equity Attributable to Shareholders	2,151	2,372	2,295	2,743

\* Unaudited  
\*\* Reclassified

Operational Office

Jl. Raya Pasar Minggu No. 7	Hotline (62 21) 798 7070	info@TunasGroup.com
Jakarta 12740 Indonesia	SMS (62) 8189 88627	www.TunasGroup.com
Tel. (62 21) 794 4788		
Fax. (62 21) 799 5621		



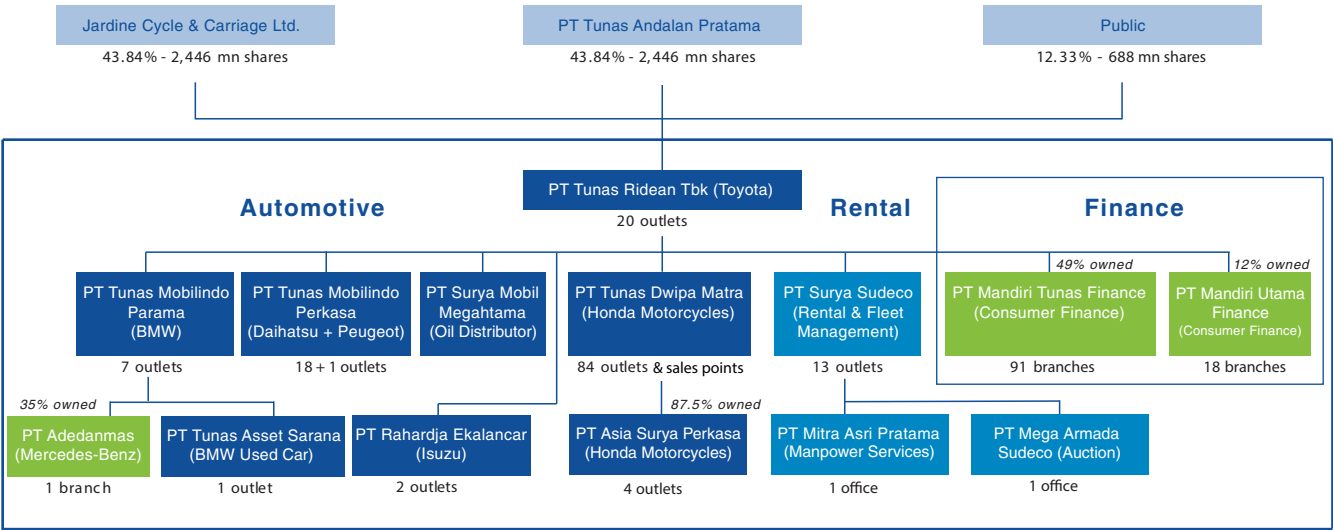
ABOUT THE GROUP

- 1967**  
Established by Anton Setiawan in Jakarta.
- 1967-1974**  
Importer & Retailer of Fiat, Holden & Mercedes Benz, Peugeot & Honda motorcycles.
- 1974**  
Authorised dealer for Toyota, Daihatsu, BMW, Peugeot & Honda motorcycles.
- 1985**  
Tunas Finance established.
- 1995**  
PT Tunas Ridean listed on JSX with Jardine Motors (held by Jardine Cycle & Carriage taking a 25% stake).
- 1999**  
Tunas Rental established.
- 2001 & 2003**  
Awarded Best Listed Company in Trade Sector by Investor Magazine.
- 2004**  
Awarded National Best Toyota Dealer for Customer Satisfaction.
- 2005**  
- Awarded Toyota Best Mechanic, Best Branch Manager & Best After Sales Service for Customer Satisfaction in Indonesia.
- 2006**  
- Awarded 1<sup>st</sup> and 3<sup>rd</sup> Best Daihatsu Mechanic.  
- Anton Setiawan awarded Ernst & Young Entrepreneurship Lifetime Achievement Award.
- 2007**  
- Awarded Best Sales & After Sales categories by BMW, Toyota & Daihatsu.  
- Tunas Finance awarded Golden Award for Services Quality by Marketing Magazine and Carre.
- 2008**  
- Awarded Best Listed Company in Trade Sector by Investor Magazine for the 3<sup>rd</sup> time.  
- Awarded Best Sales & After Sales categories by Toyota & Daihatsu.  
- Tunas Finance awarded 1<sup>st</sup> Best Multifinance Company 2008 by Investor Magazine in the Rp 2-4 trillion assets category.  
- Tunas Rental achieved ISO 9001:2000 certification.
- 2009**  
- Sold 51% interest of PT Mandiri Tunas Finance (previously PT Tunas Financindo Sarana) to PT Bank Mandiri (Persero) Tbk.  
- Ranked 1<sup>st</sup> among The Best Public Companies Based on RWA<sup>™</sup> (Relative Wealth Added) for Retailing category by SWA Magazine.  
- Awarded Best Small-Cap in Asia's Best Companies Poll by Finance Asia Magazine.  
- Awarded Best Sales & After Sales categories by BMW, Toyota and Daihatsu.  
- Tunas Toyota awarded 1<sup>st</sup> Best Mechanic General Repair 2009 by Auto2000.

- 2010**  
- Named in SWA 100: Indonesia Best Public Companies 2010 based on WAI<sup>™</sup> (Wealth Added Index) by Stern Stewart & Co by SWA Magazine.  
- Named 60<sup>th</sup> Biggest Company and 40<sup>th</sup> Fastest-Growing Company in Indonesia by Fortune Indonesia Magazine.  
- Awarded Best Sales & After Sales categories by Toyota Daihatsu, BMW and Honda Motorcycle.
- 2011**  
- Won national awards in Sales and After Sales categories from Toyota, Daihatsu and Honda Motorcycle  
- Numerous industry awards follow annually.
- 2012**  
Acquired PT Rahardja Ekalancar (Isuzu Dealer)
- 2013**  
- Tunas Daihatsu won national Best Dealer Outlet award for third year in a row.  
- Won overall second out of 29 main dealers in national Honda Motorcycle frontline service contest.  
- Established PT Mitra Asri Pratama (Driver Services).
- 2014**  
- Won National Awards in Sales and After-Sales categories from Toyota, Daihatsu and Honda Motor  
- Won The Best Outlet National from Tunas Daihatsu.  
- Established PT Asia Surya Perkasa (Main Dealer Honda in Bangka Belitung).
- 2015**  
- Won 1<sup>st</sup> place in the Best Service Advisor in Honda Technical Skill Contest.  
- Won 1<sup>st</sup> place in the Best Sales Supervisor in Toyota Dealer People Award.  
- Won 1<sup>st</sup> place in the Best Customer Service Dealer Outlet in Daihatsu National Conference.  
- Invested in a minority stake (12%) in PT Mandiri Utama Finance
- 2016**  
- Won 1<sup>st</sup> place in the Front Line People from Honda.  
- Awarded Best Sales, After-Sales, and Front Line categories by Toyota, Daihatsu, BMW, Isuzu and Honda Motor.  
- Tunas Daihatsu won Bronze medal on ASEAN Skills Competition category Automobile Technology (Mechanic).  
- Tunas Dwipa Matra won Platinum Medal Best of the Best Manager based on Indonesia Contact Centre Association (ICCA).

Today, Tunas Group is the largest and only listed independent automotive retail group in Indonesia with 152 outlets.

GROUP STRUCTURE



NUMBER OF BRANCHES BY GEOGRAPHY

	TOYOTA	BMW*	DAIHATSU	PEUGEOT	HONDA**	RENTAL***	ISUZU
DKI Jakarta	10	5	7	1	1	2	2
West Java/Banten	9	2	8	-	8	4	-
Lampung	1	-	1	-	30	-	-
Other Sumatera	-	-	2	-	27	3	-
Kalimantan	-	1	-	-	6	2	-
Sulawesi	-	-	-	-	9	1	-
Other	-	-	-	-	7	3	-
TOTAL	20	8	18	1	88	15	2
						TOTAL :	152

\* Including Used Car    \*\* Including Sales Points  
\*\*\* Including Service Points, Fleet Drivers & Auction

MARKET SHARE

	Full Year 2015				Year to September 30, 2016			
	NATIONAL		TUNAS		NATIONAL		TUNAS	
	Units	% YoY	Units	% YoY	Units	% YoY	Units	% YoY
Toyota	321,818	-19%	25,108	-18%	275,072	14%	22,743	21%
Daihatsu	167,808	-9%	16,766	-20%	133,556	5%	13,726	11%
BMW	2,700	6%	1,022	-10%	1,745	-12%	647	-14%
Peugeot	40	-38%	-	-100%	28	-15%	-	N/M
Isuzu	19,350	-32%	524	-41%	11,706	-17%	347	-23%
TOTAL NEW CARS	1,013,291	-16%	43,420	-19%	783,470	2%	37,463	16%
Honda Motorcycles	4,453,888	-12%	206,328	-1%	3,174,150	-3%	148,401	-4%
TOTAL NEW MOTORCYCLES	6,480,155	-18%	206,328	-1%	4,351,397	-10%	148,401	-4%

Note : GAIKINDO and AISI ( Distribution Units )

AUTOMOTIVE

(billion rupiah)	2014	2015	3Q 15 YTD*	3Q 16 YTD*
NET REVENUE**	10,544	9,541	7,078	8,871
Toyota	5,005	4,385	3,315	4,732
Daihatsu	2,160	1,772	1,295	1,583
BMW	792	776	576	533
Peugeot	2	1	1	0
Isuzu	173	114	88	86
Honda Motorcycles	2,375	2,470	1,784	1,922
Used Cars	38	23	19	15
PROFIT ATTRIBUTABLE TO SHAREHOLDERS	123	138	84	287

\* Unaudited

\*\* Include showrooms and workshops

TUNAS RENTAL

(billion rupiah, except for units)	2014	2015	3Q 15 YTD*	3Q 16 YTD*
Rental Units	7,461	7,637	7,961	7,730
Revenue	482	616	445	484
Operations	374	475	347	368
Disposals	108	141	98	116
EBITDA	257	315	231	251
PROFIT ATTRIBUTABLE TO SHAREHOLDERS	16	9	4	18

\* Unaudited

MANDIRI TUNAS FINANCE (49% OWNED)

(billion rupiah)	2014	2015	3Q 15 YTD*	3Q 16 YTD*
MANDIRI TUNAS FINANCE @100%				
Revenue	1,514	1,988	1,420	1,803
Net Profit	234	307	226	240
TUNAS SHARE OF NET PROFIT	115	144	111	118
New Lending	14,775	17,142	11,950	13,363
New Cars	13,886	16,593	11,530	13,125
Used Cars	627	335	262	173
Motorcycle and other	262	214	158	65
Consumer Financing Receivables	5,893	7,883	7,046	8,684
Net Investment in Finance Leases	767	598	666	720

\* Unaudited