

GROUP PROFIT AND LOSS

(billion rupiah)	2016	2017	1Q 17 YTD*	1Q 18 YTD*
Revenue	12,454	12,917	3,508	3,526
Profit Attributable to Shareholders	552	475	105	141
EBITDA	1,031	886	198	247
Financial Ratios				
Average ROE Attributable to Shareholders	21.3%	16.0%	14.7%	17.6%
Average ROA	11.8%	9.1%	8.1%	10.0%
EPS (Rp)	99	85	19	25
Dividend per Share				
Interim (Rp)	10.0	5.0	-	-
Final (Rp)	20.0	20.0	-	-

* Unaudited

GROUP FINANCIAL POSTION

(billion rupiah)	2016**	2017	1Q 17 YTD*	1Q 18 YTD*
Current Assets	2,129	2,262	2,656	2,501
Fixed Assets - Net	1,885	2,109	1,925	2,139
Total Assets	4,978	5,465	5,467	5,768
Current Liabilities	1,636	1,608	2,053	1,719
Non-Current Liabilities	519	719	481	772
Equity Attributable to Shareholders	2,814	3,128	2,923	3,267

* Unaudited

** Reclassified

Operational Office

Jl. Raya Pasar Minggu No.7
Jakarta 12740 Indonesia
Tel. (62 21) 794 4788
Fax. (62 21) 799 5621

Hotline (62 21) 798 7070
SMS (62) 8189 88627

info@tunasgroup.com
www.tunasgroup.com



INVESTOR SHEET 1ST QUARTER 2018

ABOUT THE GROUP

1967

Established by Anton Setiawan in Jakarta.

1967-1974

Importer & Retailer of Fiat, Holden & Mercedes Benz, Peugeot & Honda motorcycles.

1974

Authorised dealer for Toyota, Daihatsu, BMW, Peugeot & Honda motorcycles.

1985

Tunas Finance established.

1995

PT Tunas Ridean listed on JSX with Jardine Motors (held by Jardine Cycle & Carriage taking a 25% stake).

1999

Tunas Rental established.

2001 & 2003

Awarded Best Listed Company in Trade Sector by Investor Magazine.

2004

Awarded National Best Toyota Dealer for Customer Satisfaction.

2005

- Awarded Toyota Best Mechanic, Best Branch Manager & Best After Sales Service for Customer Satisfaction in Indonesia.

2006

- Awarded 1st and 3rd Best Daihatsu Mechanic.

- Anton Setiawan awarded Ernst & Young Entrepreneurship Lifetime Achievement Award.

2007

- Awarded Best Sales & After Sales categories by BMW, Toyota & Daihatsu.

- Tunas Finance awarded Golden Award for Services Quality by Marketing Magazine and Carre.

2008

- Awarded Best Listed Company in Trade Sector by Investor Magazine for the 3rd time.

- Awarded Best Sales & After Sales categories by Toyota & Daihatsu.

- Tunas Finance awarded 1st Best Multifinance Company 2008 by Investor Magazine in the Rp 2-4 trillion assets category.

- Tunas Rent achieved ISO 9001:2000 certification.

2009

- Sold 51% interest of PT Mandiri Tunas Finance (previously PT Tunas Financindo Sarana) to PT Bank Mandiri (Persero) Tbk.

- Ranked 1st among The Best Public Companies Based on RWA[™] (Relative Wealth Added) for Retailing category by SWA Magazine.

- Awarded Best Small-Cap in Asia's Best Companies Poll by Finance Asia Magazine.

- Awarded Best Sales & After Sales categories by BMW,Toyota and Daihatsu.

- Tunas Toyota awarded 1st Best Mechanic General Repair 2009 by Auto2000.

2010

- Named in SWA 100: Indonesia Best Public Companies 2010. based on WAI[™] (Wealth Added Index) by Stern Stewart & Co by SWA Magazine.

- Named 60th Biggest Company and 40th Fastest-Growing Company in Indonesia by Fortune Indonesia Magazine.

- Awarded Best Sales & After Sales categories by Toyota Daihatsu, BMW and Honda Motorcycle.

2011

- Won national awards in Sales and After Sales categories from Toyota, Daihatsu and Honda Motorcycle.

- Numerous industry awards follow annually.

2012

Acquired PT Rahardja Ekalancar (Isuzu Dealer).

2013

- Tunas Daihatsu won national Best Dealer Outlet award for third year in a row.

- Won overall second out of 29 main dealers in National Honda Motorcycle frontline service contest.

- Established PT Mitra Asri Pratama (Driver Services).

2014

- Won National Awards in Sales and After-Sales categories from Toyota, Daihatsu and Honda Motor.

- Won The Best Outlet National from Tunas Daihatsu.

- Established PT Asia Surya Perkasa (Main Dealer Honda in Bangka Belitung).

2015

- Won National Awards in Sales, After-sales service and Front Line categories from Toyota, Honda and Daihatsu.

- Invested in a minority stake (12%) in PT Mandiri Utama Finance.

2016

- Won 1st place in the Front Line People from Honda.

- Awarded Best Sales, After-Sales, and Front Line categories by Toyota, Daihatsu, BMW, Isuzu and Honda Motor.

- Tunas Daihatsu won Bronze medal on ASEAN Skills Competition category Automobile Technology (Mechanic).

- Tunas Dwipa Matra won Platinum Medal Best of the Best Manager based on Indonesia Contact Centre Association (ICCA).

2017

- TOP 50 Emiten Midcap - The IICD CG Appreciation by Indonesia Institute For Corporate Directorship (IICD).

- Brand Finance TOP 100 Most Valuable Indonesian Brands 2017 base on valuationby Brand Finance Asia Pasific & SWA Magazine.

- Best of the Best Awards-The Top 50 Companies for 2017 by Forbes Indonesia.

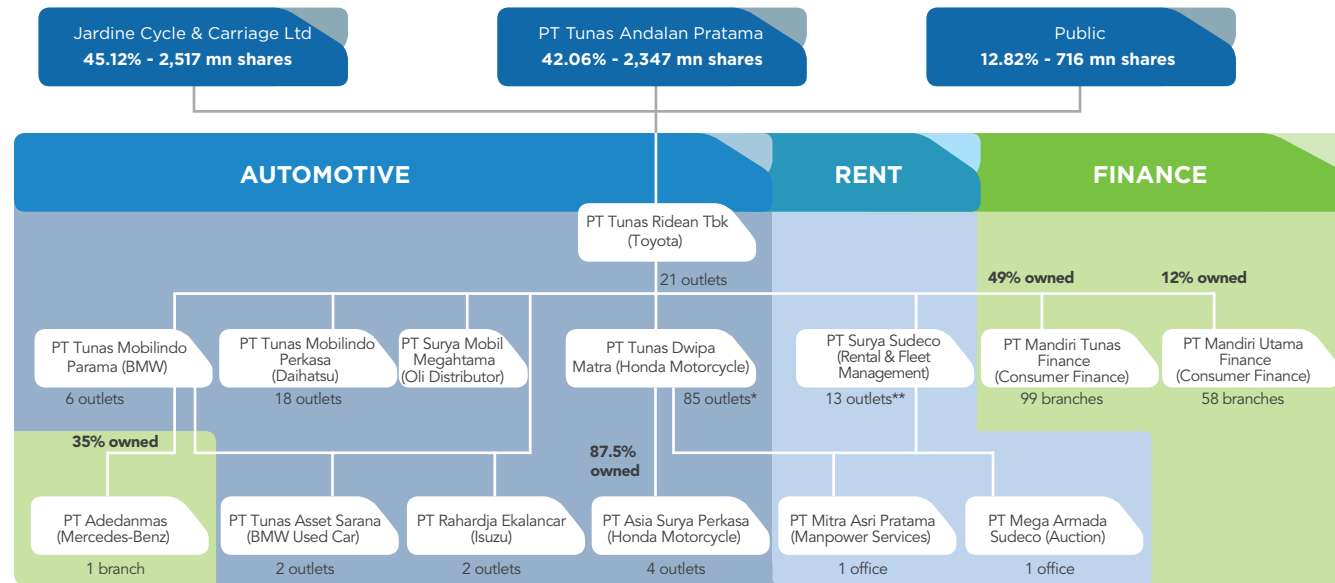
- Won National Awards in Sales and After-Sales categories from Toyota, Daihatsu, Isuzu and Honda Motor.

2018

- 3rd winner The Best LPD Technical Service

- Daihatsu National Technical Skill Contest 2018.

GROUP STRUCTURE



As of 31 December 2018

*Including Sales Points

**Including Service Points, Fleet Drivers & Auction

NUMBER OF BRANCHES BY GEOGRAPHY

	TOYOTA	BMW*	DAIHATSU	HONDA*	RENT**	ISUZU
DKI Jakarta	10	5	7	1	2	2
West Java/Banten	10	3	8	8	4	-
Lampung	1	-	1	31	-	-
Others Sumatera	-	-	2	27	3	-
Kalimantan	-	-	-	6	2	-
Sulawesi	-	-	-	9	1	-
Others	-	-	-	7	3	-
TOTAL	21	8	18	89	15	2

* Including Major Outlets

** Including Service Points

TOTAL : 153

MARKET SHARE

	Full Year 2017				Year to March 31, 2018			
	NATIONAL		TUNAS		NATIONAL		TUNAS	
	Units	% YoY	Units	% YoY	Units	% YoY	Units	% YoY
Toyota	371,332	-3%	31,105	-1%	84,494	-21%	7,873	-20%
Daihatsu	186,381	-2%	18,934	3%	51,607	4%	5,430	16%
BMW	2,800	12%	1,094	31%	566	49%	333	41%
Peugeot	34	-17%	-	N/M	19	171%	-	N/M
Isuzu	20,085	20%	371	-7%	5,395	35%	113	3%
Total New Cars	1,079,886	2%	51,504	1%	291,920	3%	13,749	-7%
Honda Motorcycles	4,385,888	0%	223,276	8%	1,069,296	0%	51,732	13%
Total New Motorcycles	5,886,103	-1%	223,276	8%	1,457,494	4%	51,732	13%

Note : GAIKINDO and AISI (Distribution Units)

AUTOMOTIVE

(billion rupiah)	2016	2017	1Q 17 YTD*	1Q 18 YTD*
Net Revenue**	11,806	12,227	3,353	3,330
Toyota	6,196	6,041	1,958	1,655
Daihatsu	2,125	2,175	545	658
BMW	692	855	200	259
Peugeot	1	0	0	0
Isuzu	100	111	30	32
Honda Motorcycles	2,674	3,037	617	724
Used Cars	18	8	3	2
PROFIT ATTRIBUTABLE TO SHAREHOLDERS	363	241	61	76

* Unaudited

** Include showrooms and workshops

TUNAS RENT

(billion rupiah, except for units)	2016	2017	1Q 17 YTD*	1Q 18 YTD*
Rental Units	7,730	8,350	7,700	8,361
Revenue	647	690	155	197
Operations	493	556	125	148
Disposals	154	135	30	49
EBITDA	336	317	77	88
PROFIT ATTRIBUTABLE TO SHAREHOLDERS	25	62	19	17

* Unaudited

MANDIRI TUNAS FINANCE (49% OWNED)

(billion rupiah)	2016	2017	1Q 17 YTD*	1Q 18 YTD*
Mandiri Tunas Finance @100%				
Revenue	2,449	2,738	615	757
Net Profit	335	350	53	98
Tunas Share Of Net Profit	164	172	26	48
New Lending	18,630	22,204	4,572	6,599
New Cars	18,342	21,791	4,502	6,380
Used Cars	215	382	64	211
Motorcycle and other	73	32	6	8
Consumer Financing Receivables	9,669	11,181	9,574	11,647
Net Investment in Finance Leases	830	2,357	1,100	2,888

* Unaudited